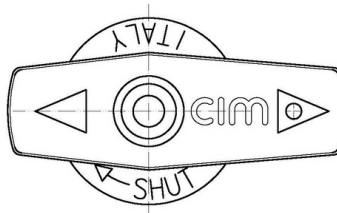
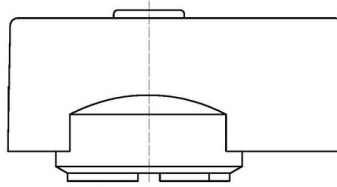


## Cim 952

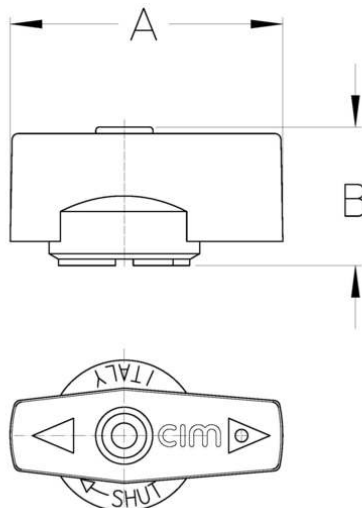
MANIGLIA IN ALLUMINIO SERIE Cim 150 - 170



Realizzato in ottemperanza ai requisiti gestionali della norma EN ISO 9001.  
Accessorio/Ricambio originale per prodotti Cimberio.

Garanzia 2 anni.

### DISEGNO TECNICO E TABELLA



A	43
<b>Grms.</b>	<b>8</b>
B	22

## CERTIFICAZIONI

